



WABI SABI TABI



【WABI SABI TABI】

Travel to meet the good old tradition
and natural charms of Bizen City,
the home of pottery 🍵



Travel to meet the good old tradition and natural charms of Bizen City, the home of pottery

WABI SABI TABI♥

WABI SABI TABI☺

[What is Wabi Sabi?]

Wabi Sabi is Japan's distinctive aesthetics expressing simple and serene beauty. Bizen Ware does not use glaze but is created only with clay and flames as a representative example of the *Wabi Sabi* culture that attracted Sen no Rikyu and Toyotomi Hideyoshi. Simple yet traditional Japanese scenery remains in Bizen City. Let's start on a journey to Bizen to encounter nature, history, and culture and feel the *Wabi Sabi*.

[Access]

Bizen City is located along the prefectural boundary between the southeastern edge of Okayama Prefecture and Hyogo Prefecture, and you can get there by train from Himeji in 50 minutes.



Train: Get off at the JR stations of Ako Line or Sanyo Line
Shikansen: Get off at Okayama Station or Aioi Station
Car: Get off at Bizen Interchange or Wake Interchange



CONTENTS

| | |
|---|----|
| WABI SABI TABI♥ | 01 |
| Bizen Ware | 03 |
| Special Historic Spot Former Shizutani School | 05 |
| Hattouji Furusato Village | 07 |
| Hinase Islands | 09 |
| [Introduction of the Model Courses] | |
| Bizen/Yoshinaga/Hinase | 11 |
| Map/Access | 13 |



Bizen Ware Put the pieces into the kiln and fire for one week to ten days while adding split pine firewood. The hottest temperature is about 1200 degrees Celsius. Fired *keshiki* (pattern) varies widely such as *goma*, *sangiri*, *hidasuki*, *botamochi*, etc., and these are created by arranging the ways the pieces are placed into the kiln and how the split pine firewood is burned.

Bizen Ware

①Bizen-yaki Dento Sangyo Kaikan (Bizen Ware Traditional Industrial Hall)

The Tourist Information Center and a café where you can drink coffee in Bizen Ware cups are found on the first floor. The gallery for Bizen Ware artists is found on the second floor, where you can purchase pieces.



③Tougei (Pottery) Center

The Tougei Center accepts trainees who wish to acquire Bizen Ware techniques and engage in production. For more information, please see their website.



②Bizen Ware Traditional and Contemporary Art Museum

Materials and pieces of Bizen Ware, which have been produced for a 1000 years and range from Kobizen (ancient bizen) to the modern age, are exhibited for the public.



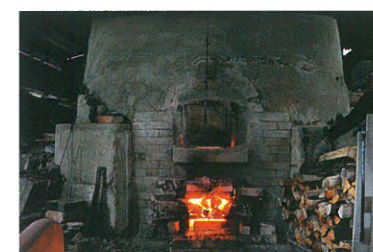
After crushing and soaking in water as needed, drain the water and step on it



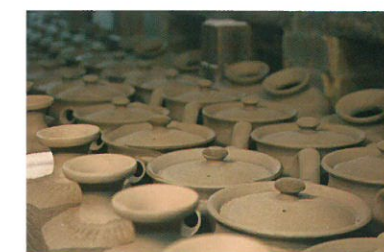
Work the soil and conduct kikuneri (chrysanthemum crumpling) to remove the air



Hand kneading and pottery wheel work



Firing in the Kiln



Store them on the shelf to let them dry naturally



Handiwork (in some cases)

Pottery Making Scenes

Bizen Ware pieces are finished after going through six processes. With the artisan's techniques of calculating the various materials, firing method, and position in the kiln, as well as the ultimate power of nature, a one-and-only piece will be born.



Lecture Hall of the Former Shizutani School

The lecture hall represents the former Shizutani School, or the Sanctuary of Learning, and consists of an inner room supported by ten Japanese zelkova round columns and entry sides surrounding the room; this is the only school building designated a national treasure. The hall is still used as an educational facility for one-day training for elementary school students, new student training for junior high school and high school students, company employee training, learning in the hall, recitation of Analects, etc.

Special Historic Spot Former Shizutani School



Special Historic Spot Former Shizutani School

The Shizutani School was built by Ikeda Mitsumasa who was the lord of the Okayama domain in 1670 in the early Edo period, and it is the world's oldest existing public school for common people. In April 2015, the school was designated the first Japan heritage in the Educational Heritage Sites of Modern Japan.



Aspirations of Shizutani School

As an inherited traditional event, Yomihajime no Gi (Ceremony of the First Recitation) will be held in the New Year. About 200 high school students and private citizens participate in the event, recite Analects in a loud voice, and polish the floor of the lecture hall. The ceremony to praise Confucius' virtue is called Sekisai which will be held on the fourth Saturday in October, and attendees will also be publicly recruited.



Statue of Confucius

Hattouji Furusato Village



Hattouji International Villa

Built more than 130 years ago and still showing signs of the Edo period, the building was the film location for the movie *Black Rain* (directed by Shohei Imamura). Later, the building was renovated as an accommodation facility for foreigners, which was opened in 1989. You can experience old-style Japanese life, such as a happy circle sitting around the open hearth and the Goemon-buro bath.



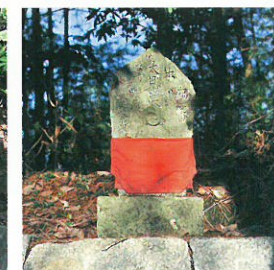
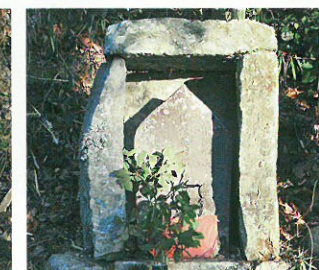
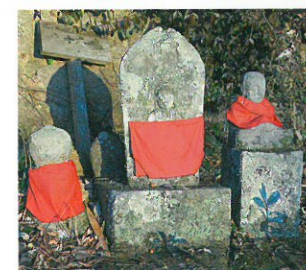
Hattouji Furusato Village

A village where simple, old-style, and warm time passes in all four seasons exists here. There are many thatched houses in Hattouji Furusato Village, and you can fully enjoy rural life, such as staying in the house and agriculture experience. These houses were used as film locations for director Imamura's *Black Rain*.



Goemon-buro bath

Hattouji-yama Mountain Visit 88 Sacred Places



This course requires about an hour and 30 minutes with a focus on Hatto-jiin Temple. You can visit 88 small stone Buddhist images while enjoying the scenery of a mountain village and walking in the mountains. Visitors can also have a bird's eye view of Bizen and enjoy a superb view on the small pilgrimage.



Setonaikai National Park

Setonaikai National Park was designated the first national park in 1934 along with Unzen and Kirishima. The area of the park extends over 11 prefectures. In Bizen City, the 13 small and large islands of the Hinase Island chain are included in the park area where oysters are cultured and citrus fruits are cultivated, plus you can enjoy the wonderful sunsets and beautiful natural landscapes. The calm sea of Hinase in the Seto Inland Sea is ideal for culturing oysters and enjoying water sports.



Kashirajima Island

(1) A small island with a perimeter of 4 km. Enjoy Mandarin orange picking, sea bathing, and fishing. (2) An Italian restaurant using the former Kashirajima Post Office. Dishes using local fresh fish and shellfish are exquisite! Please visit the restaurant♪ (By reservation only) (3) The view from Tanukiyama Observation Deck is truly superb! A large panoramic view of Setouchi spreads out in front of you.



(1) The Bizen-Hinase Bridge connects the main island and Kakuijima Island (2) Otabu Island Shizen Kenkyuro, Hinase Islands' leading scenic spot (3) Speaking of Hinase, it is Kakioko (4) Genroku Bohatei (breakwater) (registered tangible cultural property), which was built by Tsuda Nagatada about 300 years ago (5) Water-Discharge Exercise (Genpei Hosui Gassen); the fire company's traditional event held in February of each year



【Two-Day and One-Night Model Plan】

Bizen/Hinase/Yoshinaga Areas » Model Courses

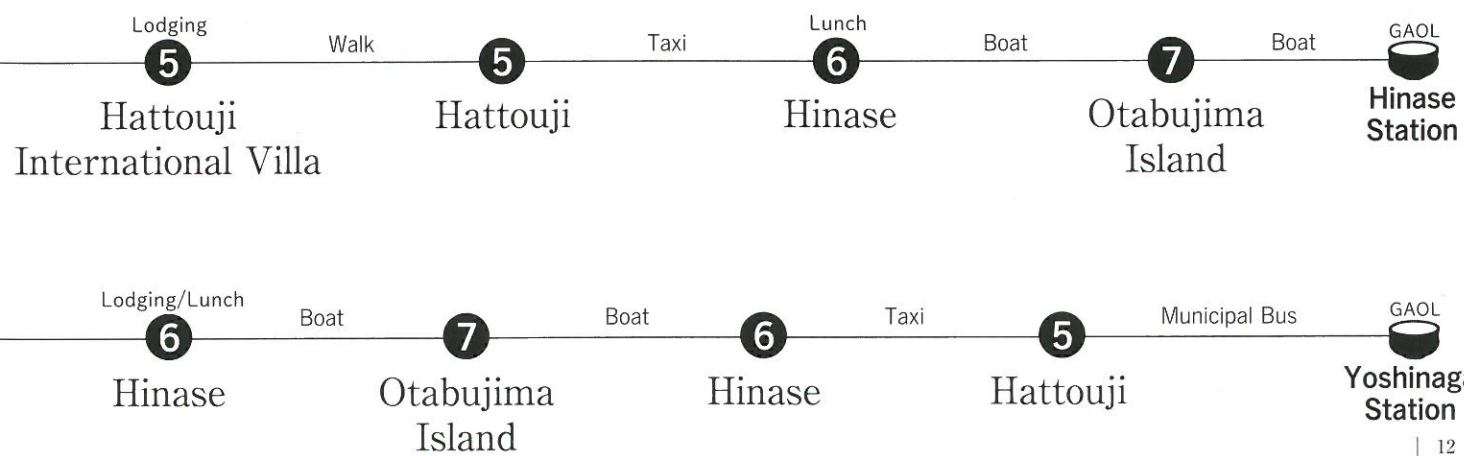
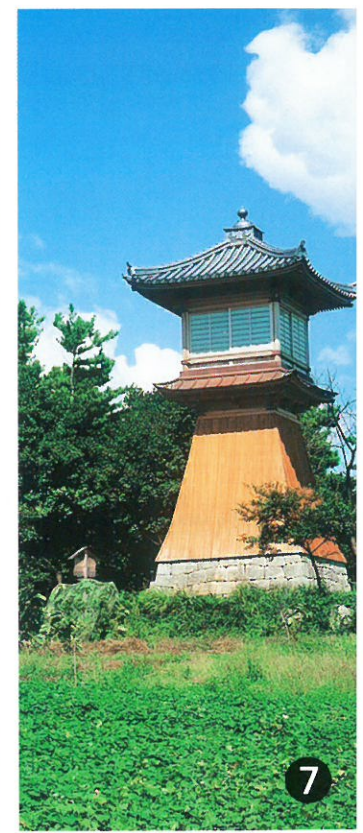
Recommended route for tourists to follow

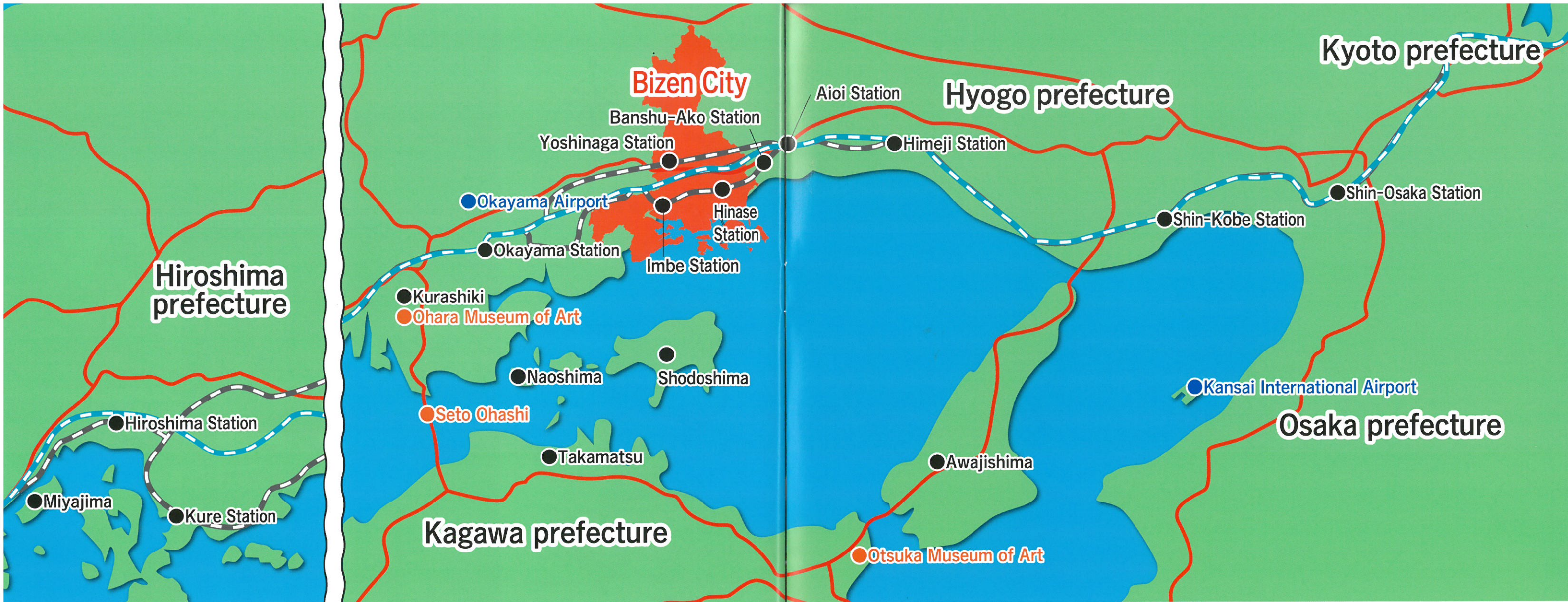


START
Imbe Station

Experience ① Walk Lunch ② Walk ③ Train Municipal Bus ④ Municipal Bus

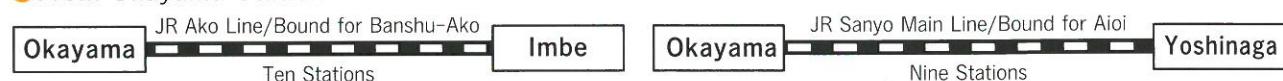
Bizen-yaki Dento Sangyo Kaikan Lunch Imbe Station Iri Station Former Shizutani School



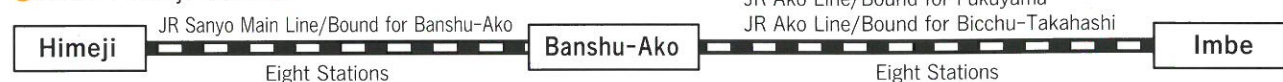


Access to Bizen City

From Okayama Station



From Himeji Station



By Car



Contact Information for Transport Facilities ... Area Code (0869)

【Taxi】

- Hinase Kotsu ☎72-0205
- Kagato Taxi ☎66-9041
- Imbe Taxi ☎64-2154
- Bizen Kotsu ☎64-3344
- Kaio Kotsu ☎67-0021

- Yoshinaga Taxi ☎84-4000
- Mitsubishi Taxi ☎62-0145
- Municipal Bus ☎92-4892

【Rent-a-Car】

- Times Car Rental Bizen Branch ☎63-1135

【Rent-a-Bicycle】

- Bizen Tourist Association (On the side of JR Hinase Station) ☎72-1919
- Bizen Cycling Terminal (JR Nishi-Katakami Station, 15-minute walk) ☎66-9041 (Weekdays) ☎63-0271 (Saturdays, Sundays, and holidays)

Contact Information for Sightseeing ... Area Code (0869)

- Bizen Tourist Association ☎72-1919
- Okayama-ken Bizenyaki Toyuukai ☎64-1001
- Bizen Ware Traditional and Contemporary Art Museum ☎64-1400
- Special Historic Spot Former Shizutani School ☎67-1436
- Hattouji International Villa ☎086-256-2576
- Kodai Taiken no Sato Mahoroba ☎090-4698-1237

BIZEN Application

Bizen City Official App!! **「BIZEN Audio Guide」**

Please search BIZEN Audio Guide in the App Store or Google Play and install it (for free).



This app is exclusively for Bizen City, which distributes major tourist information and locations as well as the latest information on Bizen City.

◆Major Functions -Tourist Information -Latest Information -Map to Each Tourist Facility

Production Collaborators: Bizen City Tea Ceremony Federation, Okayama-ken Bizenyaki Toyuukai, Preservation Association in Honor of Special Historic Spot Former Shizutani School, Hinase-cho Fisheries Cooperative, Bizen Tourist Association, Hattouji Furusato Village, Hattouji International Villa, Kokorozushi, and Café Udo, Ikenobo

- Issued by: Bizen City, Okayama Prefecture 126 Higashikatakami, Bizen City, Okayama Prefecture 705-8602
- Tel: +81-869-64-3301 (Main number) ● <http://www.city.bizen.okayama.jp/> ● Issued Date: March, 2017 ● Production: Japan International Institute, Inc.